

# Buatan II Mill

Sustainability and Traceability Report  
Reporting period January-December 2019

Company: PT Inti Indosawit Subur ([Asian Agri](#))  
Location: Pelalawan Regency, Riau Province, INDONESIA  
Coordinates: 0.45667 101.86900

## Certified palm oil supply

### A. ISCC Certification\*

Certification: [ISCC EU](#)

### B. RSPO Certification

Certification Type: Mass Balance

Audit Report: [March, 2019](#)

### Mill Production

Capacity: 65 tons/hour

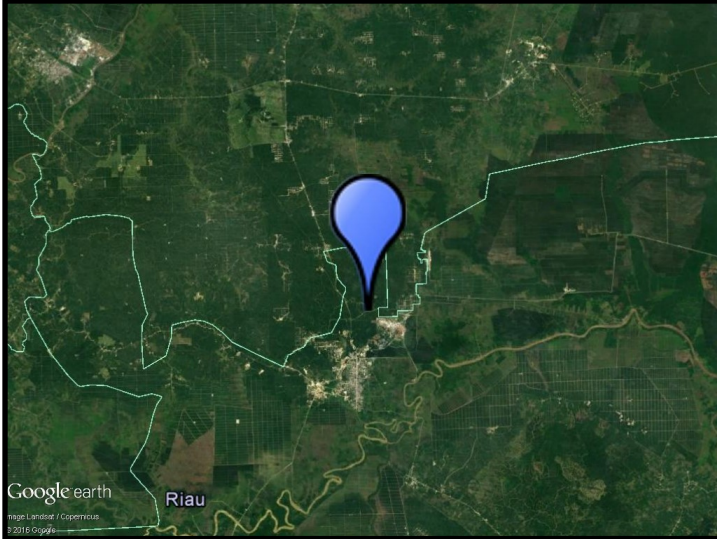
Certified Volume: 40,979 (MT)

Certified Estate	Location		Certificate
Simpang Perak	0.51028	101.81833	RSPO, ISCC
KUD Mulus Rhayu	0.510444	101.82428	RSPO, ISCC
KUD Bhirawa Bhakti	0.52225	101.79019	RSPO, ISCC
KUD Tani Rukun	0.450889	101.90089	RSPO, ISCC
KUD Kebun Sawit Harapan	0.486361	101.91019	RSPO, ISCC

Plus six additional estates; see RSPO report. KKPA ISCC Certificate.

\* This mill may be supplied by estates via Mass Balance. This list contains estates supplying to Neste; for a complete list please visit the supplier's [dashboard](#).

## Satellite image of the area surrounding the mill



View this mill in [Google Maps](#).

## Sustainability - deeply embedded in Neste's everyday business.

All palm oil we have used has been fully traceable to the plantation level since 2007, and 100% certified since 2013. We do not own any oil palm plantations, or operate any palm oil refineries. Instead, we source palm oil from carefully selected suppliers in Malaysia and Indonesia that are committed to certification and sustainability.

[www.neste.com/sustainability](http://www.neste.com/sustainability)

**NESTE**