

Mandau Mill

Sustainability and Traceability Report
Reporting period July - December 2019

Company: PT Adei Plantation ([KLK](#))
Location: Bengkalis Regency, Riau Province, INDONESIA
Coordinates: 1.08224 101.33309

Certified palm oil supply

A. ISCC Certification*

Certification: [ISCC EU](#)

B. RSPO Certification

Cert. Type: Identity Preserved

Audit Report: [April, 2019](#)

Mill Production

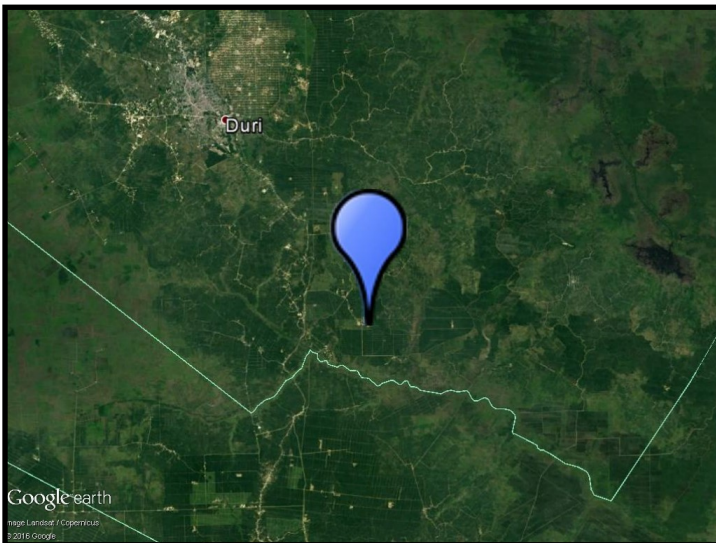
Capacity: 60 tons/hour

Certified Volume: 64,400 (MT)

Certified Estate	Location		Certificate
Mandau 1	1.07750	101.28194	RSPO, ISCC
Mandau 2	1.15167	101.33528	RSPO, ISCC
Mandau 3	1.05333	101.30056	RSPO, ISCC
Mandau 4	1.05500	101.36889	RSPO, ISCC
Mandau 5	1.14444	101.32361	RSPO, ISCC
Plus one additional estate; see RSPO report			

* This mill may be supplied by estates via Mass Balance. This list contains estates supplying to Neste; for a complete list please visit the supplier's [dashboard](#).

Satellite image of the area surrounding the mill



View this mill in [Google Maps](#).

Sustainability - deeply embedded in Neste's everyday business.

All palm oil we have used has been fully traceable to the plantation level since 2007, and 100% certified since 2013. We do not own any oil palm plantations, or operate any palm oil refineries. Instead, we source palm oil from carefully selected suppliers in Malaysia and Indonesia that are committed to certification and sustainability.

www.neste.com/sustainability

NESTE