

# Negeri Lama I Mill

Sustainability and Traceability Report  
Reporting period January-December 2019

Company: PT Hari Sawit Jaya ([Asian Agri](#))

Location: Labuhan Batu Regency, North Sumatra Province, INDONESIA

Coordinates: 2.35972 100.04194

## Certified palm oil supply

### A. ISCC Certification\*

Certification: [ISCC EU](#)

### B. RSPO Certification

Certification Type: Mass Balance

Audit Report: [March, 2019](#)

### Mill Production

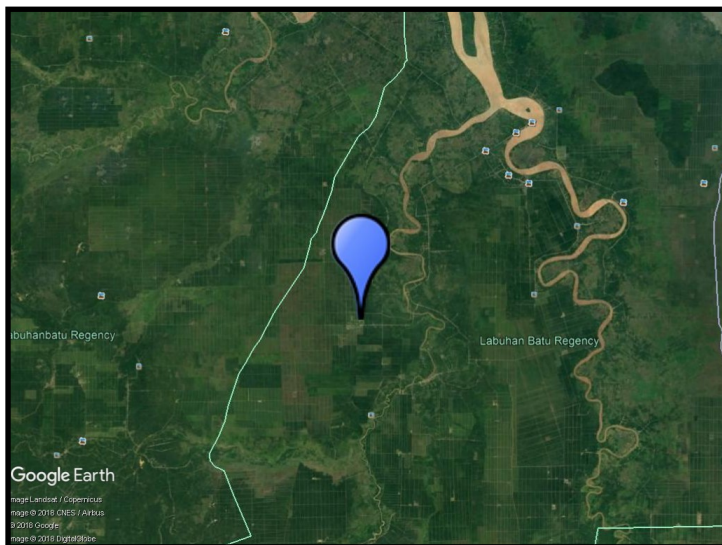
Capacity: 45 tons/hour

Certified Volume: 27,053 (MT)

Certified Estate	Location	Certificate
Negeri Lama Selatan	2.27472 99.98556	RSPO, ISCC
Negeri Lama Central	2.35417 99.97917	RSPO, ISCC
Negeri Lama Utara	2.39833 99.98222	RSPO, ISCC
Aek Kuo	2.38278 99.90500	RSPO, ISCC

\* This mill may be supplied by estates via Mass Balance. This list contains estates supplying to Neste; for a complete list please visit the supplier's [dashboard](#).

## Satellite image of the area surrounding the mill



View this mill in [Google Maps](#).

## Sustainability - deeply embedded in Neste's everyday business.

All palm oil we have used has been fully traceable to the plantation level since 2007, and 100% certified since 2013. We do not own any oil palm plantations, or operate any palm oil refineries. Instead, we source palm oil from carefully selected suppliers in Malaysia and Indonesia that are committed to certification and sustainability.

[www.neste.com/sustainability](http://www.neste.com/sustainability)

**NESTE**