

# Nilo 1 Mill

Sustainability and Traceability Report  
Reporting period July - December 2019

Company: PT Adei Plantation ([KLK](#))  
Location: Pelalawan Regency, Riau Province, INDONESIA  
Coordinates: 0.34806 101.97167

## Certified palm oil supply

### A. ISCC Certification\*

Certification: [ISCC EU](#)

### B. RSPO Certification

Certification Type: Mass Balance

Audit Report: [March, 2019](#)

### Mill Production

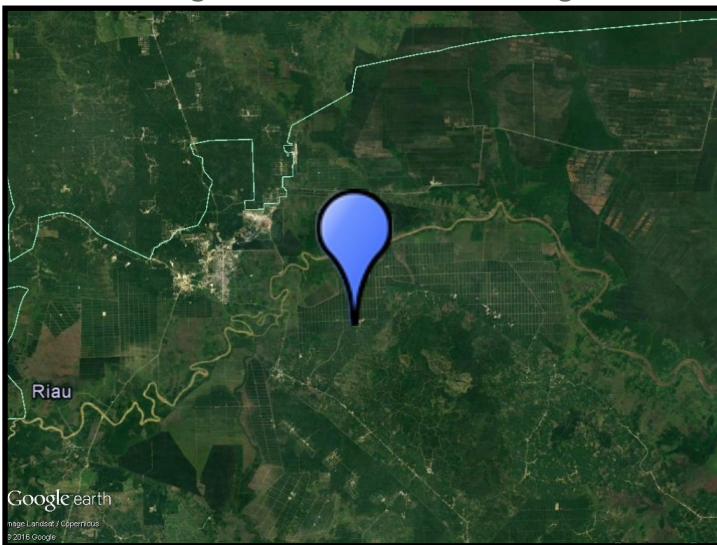
Capacity: 90 tons/hour

Certified Volume: 25,549 (MT)

Certified Estate	Location		Certificate
Nilo Barat 1	0.01861	10.03194	RSPO, ISCC
Nilo Barat 2	0.33472	101.96722	RSPO, ISCC

\* This mill may be supplied by estates via Mass Balance. This list contains estates supplying to Neste; for a complete list please visit the supplier's [dashboard](#).

## Satellite image of the area surrounding the mill



View this mill in [Google Maps](#).

## Sustainability - deeply embedded in Neste's everyday business.

All palm oil we have used has been fully traceable to the plantation level since 2007, and 100% certified since 2013. We do not own any oil palm plantations, or operate any palm oil refineries. Instead, we source palm oil from carefully selected suppliers in Malaysia and Indonesia that are committed to certification and sustainability.

[www.neste.com/sustainability](http://www.neste.com/sustainability)

**NESTE**