

Sungai Rungau Mill

Sustainability and Traceability Report
Reporting period July - December 2019

Company: PT Binasawit Abadi Pratama ([Golden Agri](#))
Location: Seruyan Regency, Central Kalimantan Province, INDONESIA
Coordinates: -2.32060 112.33400

Certified palm oil supply

A. ISCC Certification*

Certification: [ISCC EU](#)

B. RSPO Certification

Cert. Type: Identity Preserved

Audit Report: [August, 2019](#)

Mill Production

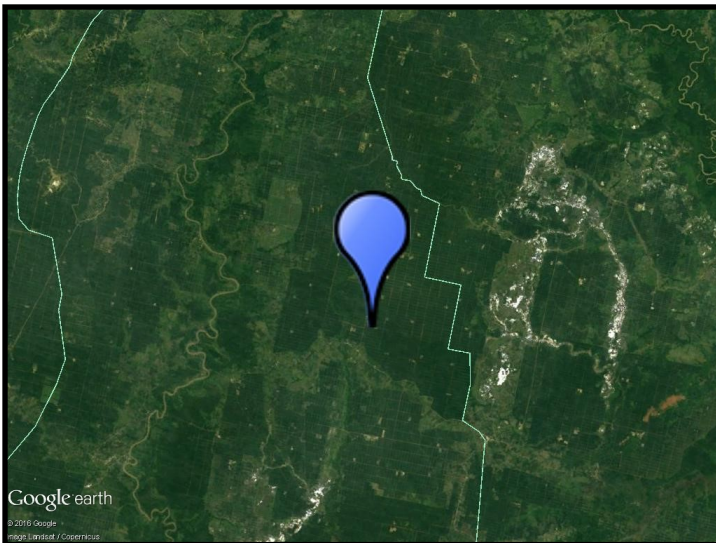
Capacity: 80 tons/hour

Certified Volume: 111.339 (MT)

Certified Estate	Location		Certificate
Sungai Rungau	-2.32889	112.31611	RSPO, ISCC
Sungai Seruyan	-2.30917	112.25778	RSPO, ISCC
Terawan	-2.34528	112.37861	RSPO, ISCC
Tangar	-2.22917	112.29306	RSPO, ISCC
Bukit Tiga	-2.18389	112.32250	RSPO, ISCC

* This mill may be supplied by estates via Mass Balance. This list contains estates supplying to Neste; for a complete list please visit the supplier's [dashboard](#).

Satellite image of the area surrounding the mill



View this mill in [Google Maps](#).

Sustainability - deeply embedded in Neste's everyday business.

All palm oil we have used has been fully traceable to the plantation level since 2007, and 100% certified since 2013. We do not own any oil palm plantations, or operate any palm oil refineries. Instead, we source palm oil from carefully selected suppliers in Malaysia and Indonesia that are committed to certification and sustainability.

www.neste.com/sustainability

NESTE